



Organizers:



ECDMFR

2026

June, 25-27
IASI, ROMANIA

The 20th European Congress of

DentoMaxilloFacial
Radiology

PROGRAM



Thinking ahead. Focused on life.

The top dental universities worldwide trust Morita CBCT*

Over 20 years of innovation in CBCT: Unrivalled image quality, durability and top-quality manufacturing - no wonder that leading universities around the world rely on the "Morita" brand.

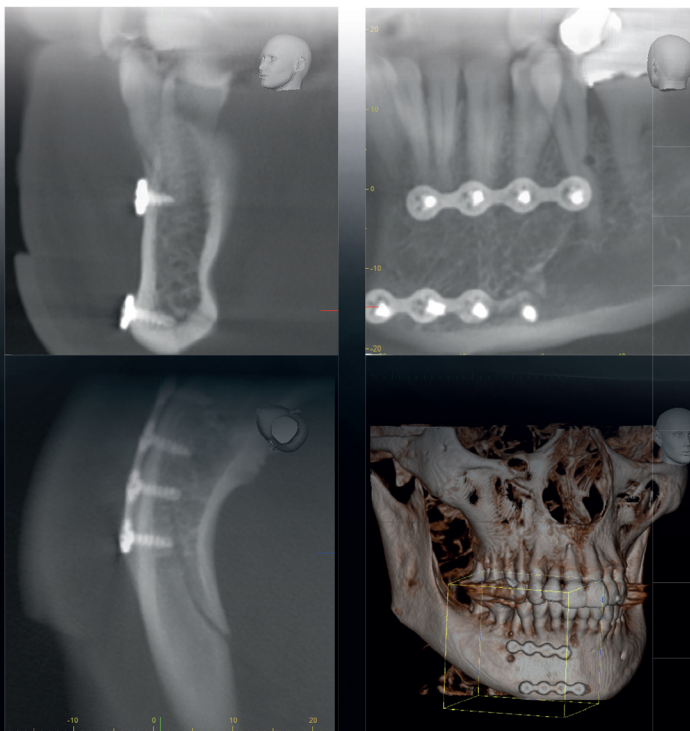
3D Accuitomo 170

Performance that convinces - qualitative & reliable.

 EADMFR

 June 26

 Iași, Romania



Images courtesy of the University Hospital of Bonn

www.morita.de

* <https://www.topuniversities.com/university-rankings-articles/university-subject-rankings/top-dentistry-schools>

TABLE OF CONTENTS

Welcome Message	2
Industrial Partner and Sponsors	3
General Information	8
About Iasi	14
Keynote Lecturers	20
Program <i>at a glance</i>	27
Detailed Scientific Program	
<i>Wednesday, June 24</i>	32
<i>Thursday, June 25</i>	39
<i>Friday, June 26</i>	55
<i>Saturday, June 27</i>	71

Dear Colleagues and Friends,

It is my great pleasure to welcome you to the **20th European Congress of Dentomaxillofacial Radiology (ECDMFR 2026)**, taking place in the beautiful city of Iași, Romania, from 25–27 June 2026.

This congress brings together distinguished clinicians, researchers, and industry partners from across Europe and beyond, providing a unique opportunity to exchange knowledge, share experiences, and explore the latest developments in dentomaxillofacial and head and neck imaging.

Under the theme **“Bridge between Dentomaxillofacial and Head and Neck Imaging”**, the scientific program has been designed to foster interdisciplinary collaboration and to highlight recent advances in imaging technologies, artificial intelligence, magnetic resonance imaging, oncology, temporomandibular joint disorders, autoimmune diseases, and many other topics shaping the future of our field.

We are proud to offer a rich and diverse program, including keynote lectures, scientific sessions, ePoster presentations, workshops, and interactive discussions led by internationally recognized experts. We hope that this congress will not only enhance scientific knowledge but also inspire new ideas, collaborations, and friendships among colleagues.

Beyond the scientific program, we invite you to discover the cultural heritage, hospitality, and vibrant atmosphere of Iași, one of Romania’s most important academic and historical centers.

On behalf of the **Local Organizing Committee** and the **Romanian Association of Dentomaxillofacial Radiology**, I would like to thank all speakers, participants, sponsors, and partners for their valuable contribution to the success of this event.

I wish you an enjoyable, productive, and memorable congress.

With warm regards,

Prof. Danisia Haba, MD, PhD

President, ECDFMR 2026 Local Organizing Committee

President, Romanian Association of Dentomaxillofacial Radiology

June, 25-27
IASI, ROMANIA

The 20th European Congress of
DentoMaxilloFacial
Radiology

INDUSTRIAL PARTNER
of The 20th European Congress of DentoMaxilloFacial Radiology



SPONSORS

of The 20th European Congress of DentoMaxilloFacial Radiology

Gold Sponsor

NEWTOM
CONE BEAM 3D IMAGING

Silver Sponsors



Bronze Sponsors



June, 25-27
IASI, ROMANIA

The 20th European Congress of
DentoMaxilloFacial
Radiology

SPONSORS

of The 20th European Congress of DentoMaxilloFacial Radiology

Sponsors



focality



Event organized
in partnership with



IASI
MUNICIPALITY

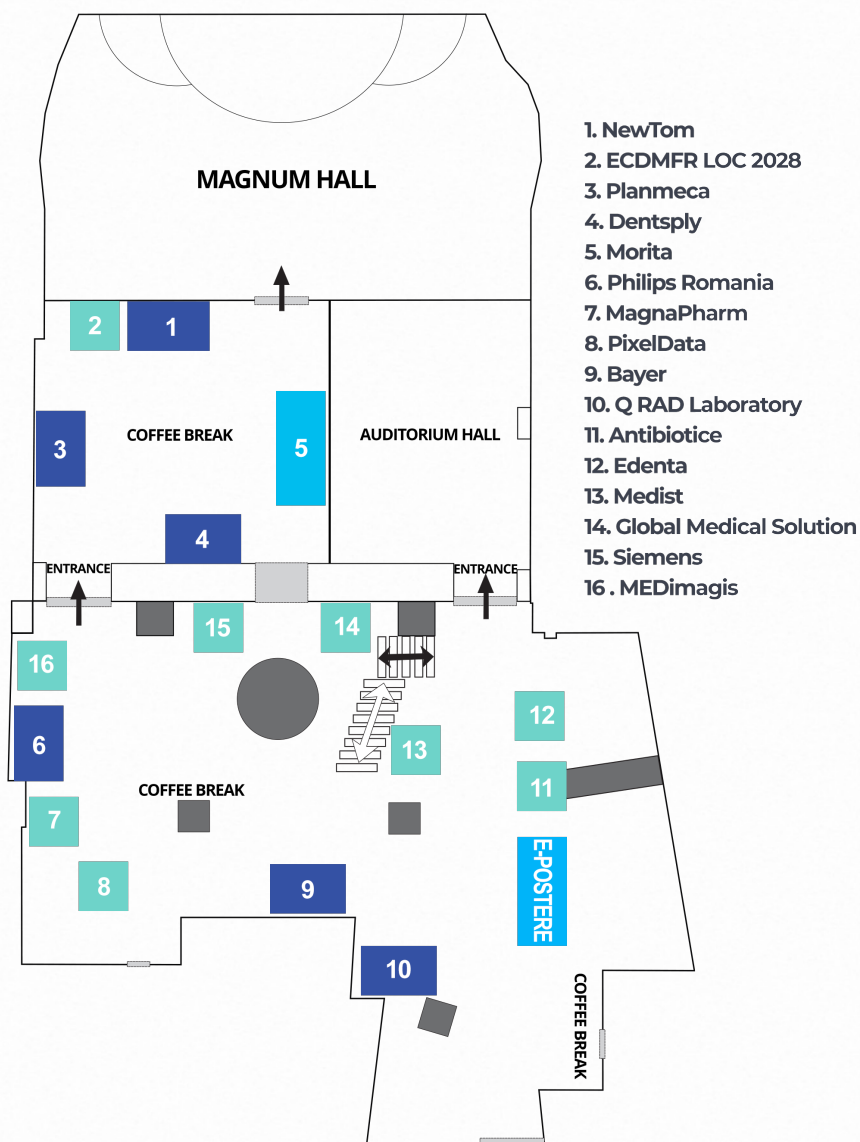


OPEN AUTO CENTER
Dealer Autorizat

MOBILITY
PARTNER

MEDICAL EXHIBITION PLAN

Level -2, International Hotel



ECDMFR

2026

June, 25-27
IASI, ROMANIA

The 20th European Congress of

**DentoMaxilloFacial
Radiology**

GENERAL
INFORMATION

The 20th European Congress of
**DentoMaxilloFacial
Radiology**

June, 25-27
IASI, ROMANIA



VENUE

International Hotel, Iași, Romania

ECDMFR 2026 OFFICIAL WEBSITE

www.eadmfr.eu

OFFICIAL LANGUAGE

English

ORGANIZERS

European Academy of DentoMaxilloFacial Radiology
Romanian Association of Dento-Maxillofacial Radiology
"Grigore T. Popa" University of Medicine and Pharmacy, Iași
Iași Society of Oral and Maxillofacial Surgery



ACCREDITATIONS:



Romanian College of Physicians



Colegiul Medicilor Stomatologi
ROMANIA

Romanian College of Dentists

June, 25-27
IASI, ROMANIA

The 20th European Congress of
DentoMaxilloFacial
Radiology



ECDMFR 2026 REGISTRATION DESK

The ECDMFR 2026 Registration Desk will be open throughout the congress and will be located on the ground floor of the International Hotel.

Registration Desk Program

Wednesday, June 24: 08.00 – 17.00

Thursday, June 25: 08.00 – 17.00

Friday, June 26: 08.00 – 17.00

Saturday, June 27: 08.00 – 13.30

CHECK-IN. ON-SITE REGISTRATION

Check-in and on-site registration will be available at the ECDMFR 2026 Registration Desk starting on Wednesday, June 24, according to the official schedule.

BADGES

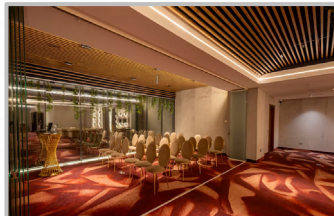
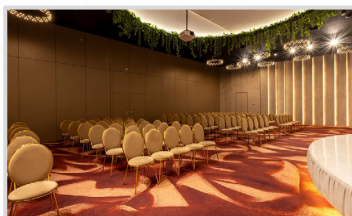
Badges will be issued to all registered participants, sponsors, exhibitors, and media representatives. Access to the scientific sessions, exhibition area, and all event-related venues will be granted only upon presentation of a valid congress badge.

SCIENTIFIC SECRETARIAT

The Scientific Secretariat will be open starting on Wednesday, June 24, and will operate at the ECDMFR 2026 Registration Desk. All presentations should be submitted to the Scientific Secretariat or sent by email in advance at contact@arrdmf-events.ro to ensure the smooth and efficient running of the scientific program.

CONFERENCE ROOMS

The ECDMFR 2026 scientific sessions will take place in the Magnum, Auditorium, and Training II Conference Rooms, located on Level -2 of the International Hotel.



ECDMFR WORKSHOPS

Workshops will take place as follows:

In Magnum Hall:

- Wednesday, June 24 | 08:30-10:00
A. Ultrasonography in Salivary Glands and Cervical Adenopathy
- Wednesday, June 24 | 10:10-11:40
A. Gadovist dose flexibility in head and neck imaging examination – Clinical cases
- Wednesday, June 24 | 11:40-13:10
A. How to enhance outcome of the root canal treatment using modern diagnostic imaging?
- Wednesday, June 24 | 14:00-15:30
A. Anaphylactic reaction to contrast agents – What the radiologist needs to know
- Wednesday, June 24 | 15:40-17:00
A. Step by step in pediatric head and neck lesions

In Auditorium Hall:

- Wednesday, June 24 | 08:30-10:00
B. Digital planning in orthognathic surgery - from virtual simulation to surgical execution
- Wednesday, June 24 | 10:10-11:40
B. ProTaper Ultimate. 3 Simple Steps. Predictable Results
- Wednesday, June 24 | 11:40-13:10
B. Spectral CT Technology in head and neck cancer
- Wednesday, June 24 | 14:00-15:30
B. Preoperative assessment and implant digital treatment planning
- Wednesday, June 24 2026 | 15:40-17:00 | Auditorium Hall
B. Ultrasound with Small Hand-Held Machines in Daily Dental Practice

ORAL PRESENTATIONS SESSIONS

Powerpoint presentations must be submitted to the Scientific Secretariat at least 3 hours prior to the scheduled presentation time. Presenters are requested to clearly indicate the presentation title, session name, conference room, date, and presentation time.

The Organizing Committee cannot be held responsible for presentation materials that have not been checked and submitted to the Scientific Secretariat in accordance with these guidelines.

June, 25-27
IASI, ROMANIA

The 20th European Congress of
DentoMaxilloFacial
Radiology

Furthermore, all authors are kindly requested to strictly adhere to the presentation times allocated in the program. In order to maintain the schedule, session chairs may interrupt presentations that exceed the allotted time.

The remaining presentation time will be displayed on the screen in the lecture hall, enabling speakers to manage their presentations effectively and ensure compliance with the program schedule.

Guidelines Oral Presentation

Allocated presentation time: 6 minutes for the presentation + 2 minutes of discussion

E-POSTERS SESSION

E-posters will be displayed in front of the Training II Conference Room of the International Hotel on Level -2, throughout the congress.

The e-poster presentations will take place in the Training II Conference Room according to the scientific program.

Guidelines ePoster Presentation

Allocated presentation time: 3 minutes for the presentation + 1 minute of discussion

MEDICAL EXHIBITION

Explore the exhibition area on Level -2 of the International Hotel and discover the innovative products, technologies, and solutions showcased by the congress partners

INFORMATION CENTER

For any other event related information please address to the Registration Desk, in the lobby of International Hotel, ground floor.

INTERNET CONNECTION

A high-speed WiFi connection is available during the event. Please login using the following:

Network ID: Magnum

Password: INTERNATIONALH4I

CHANGES IN THIS PROGRAM

The Congress Organizers reserve the right to make last-minute changes to the program due to unforeseen circumstances.

SOCIAL PROGRAM

The Opening Ceremony & Cocktail

The Opening Ceremony will take place on Wednesday, June 24, at 19:30 in the Voievozilor Hall of the Palace of Culture in Iași - one of the city's most iconic landmarks - and will be followed by a Welcome Cocktail in the groundfloor halls of the palace.

Participants are kindly requested to arrive between 19:00 and 19:30.



WALKING CITY TOUR and ROMANIAN DINNER

On Thursday, June 25, participants will enjoy a Walking City Tour of Iași, departing from the International Hotel at 18:00 and 18:10, with participants divided into two groups. The tour will be followed by a Romanian Dinner at 20:00 at Iași City Hall, providing an opportunity to experience local cuisine and Romanian hospitality.

Gala Dinner

Join us for an unforgettable evening at the ECDMFR 2026 Gala Dinner.

The Gala Dinner will take place on Friday, June 26, at 19:30 in the Sofia Restaurant, located on the 11th floor of the International Hotel, offering panoramic views over the city of Iași.

Participation in the Gala Dinner is optional and subject to an additional fee of EUR 120 per person. Tickets may be purchased at the Congress Secretariat until 11:00 on June 26.

Lunches

Lunches will be served on June 25 and 26 at specially designated buffet stations

Coffee Breaks

Coffee breaks will be provided according to the congress program and will be served in designated areas located near the conference rooms.

Tour Of Iasi

For participants wishing to further explore the city and its surroundings, customized tours can be arranged upon request. Please contact the Congress Secretariat when collecting your registration materials.

ECDMFR

2026

June, 25-27
IASI, ROMANIA

The 20th European Congress of

**DentoMaxilloFacial
Radiology**



ABOUT
IASI

ABOUT IAȘI

Iasi is the most important political, economic and cultural center of the province of Moldavia as well as one of the oldest cities in Romania. Located in the northeastern part of the country, Iasi was for many centuries the crossing point of the most important commercial routes linking Poland, Hungary, Russia and Constantinople.

Deeply rooted in history, Iasi has been the main center of Moldavian culture since 1408. The city prides itself with publishing the first Romanian newspaper and establishing the first Romanian university. Today, Iasi is home to five universities.

Over the past 500 years, history, culture and religious life have molded the city's unique character. Iasi boasts an impressive number of Orthodox churches, almost 100, most of them located in the so-called Golden Plateau (Platoul de Aur). The oldest, the Princely Saint Nicholas Church, dates from the reign of Stephen the Great (Stefan cel Mare, 1457-1504). The finest, however, are the 19th century St. Paraschiva Metropolitan Cathedral and 17th century Trei Ierarhi Church, the last a curious example of Byzantine art, erected in 1635-1639 by Vasile Lupu. Its outer walls and twin towers are intricately carved in what many think of as stone lace.

The Golden Plateau represents the nucleus of the city, around which the entire settlement developed over the centuries. With the Palace of Culture at one end and the Union Square (Piata Unirii) at the other, the Golden Plateau features churches and princely palaces on both sides of Stefan cel Mare si Sfânt Boulevard, which runs right through its centre. Many other important sites can be found on nearby streets.



IASI
MUNICIPALITY

June, 25-27
IASI, ROMANIA

The 20th European Congress of
DentoMaxilloFacial
Radiology

PALACE OF CULTURE



This remarkable construction (1906-1925), built in flamboyant neo-gothic style, stands partly on the ruins of a medieval royal court mentioned in documents dating from 1434. Today, the 365-room palace houses four of the city's museums: the Moldavian History Museum, the Ethnographic Museum, the Museum of Art and the Museum of Science and Technology. The interior decor, with the lavish furnishings and magnificent staircase of the entrance lobby, can be admired free of charge, but tickets are required for entry to the museums.

NATIONAL THEATRE



Built in the late 19th century on the site of the old City Hall, this is one of the most elegant buildings in Romania. The architects were the Viennese Fellner and Helmer who later built theatres in Cernauti and Sofia. Richly decorated in French-eclectic style, the theatre has one of the most splendid auditoriums in the country. It can seat 1,000 people and the acoustics are excellent. The theatre bears the name of the company's founder, Vasile Alecsandri (1821-1890), a renowned Romanian poet, playwright, politician and diplomat.

“ALEXANDRU IOAN CUZA” UNIVERSITY



“Alexandru Ioan Cuza” University of Iasi is the oldest university from Romania. The main university building was built between 1893 and 1897 on the site of the Great Theatre which had burned down.

The Hall of the University, known as The Hall of the Lost Footsteps, served as a parliamentary debating chamber between 1917 and 1918. In 1967, the painter Sabin Balasa created a series of strongly romanticized frescoes for the arcades.

June, 25-27
IASI, ROMANIA

The 20th European Congress of
DentoMaxilloFacial
Radiology

“GRIGORE T. POPA” UNIVERSITY OF MEDICINE AND PHARMACY



University of Medicine and Pharmacy of Iasi is one of the oldest and excellent in research and education universities in Romania (2011 Romanian university classification).

The application and admission criteria and deadline, tuition fees, transfer credits and living cost are favourable to candidate students. University of medicine Iasi has 4 Faculties with programs in English, French and Romanian: Faculty of Medicine, Faculty of Dentistry, Faculty of Pharmacy and Faculty of Medical Bioengineering.

All Faculties organise undergraduate (Bachelor) and postgraduate programs (Residency, Doctoral Degree, Master's Degree etc). The University of Medicine of Iasi is one of the best universities of medicine in Romania. It attracts more than 500 new students from all over the world: UK, Germany, France, Norway, Morocco, Tunisia, Algeria, Nigeria, Namibia, South Africa, India, Pakistan, Canada, New Zealand etc. every year.

“ST. PARASCHIVA” METROPOLITAN CATHEDRAL



Built in Italian Renaissance style, the St. Paraschiva Metropolitan Cathedral is one of the largest Orthodox Church in Romania. Construction began in 1833 and ended in 1839, but its cupolas fell and the church remained in ruins until 1880, when, with the help of the Foundation of King Carol I, work started again, lasting until 1888. The vast interior was painted in 1887 by Gheorghe Tatarescu and the stained-glass windows were completed by a Bavarian factory in Munich.

In 1639, Vasile Lupu spent Moldavia's budget for the following year and a half to acquire the relics of St. Paraschiva from Constantinople. The relics were moved to the Metropolitan Cathedral in 1889 after a fire damaged the Trei Ierarhi Church where they had originally been placed.

The cathedral still uses one of the original bells in its northeast spire. Inside the bell, an inscription says it was made from four cannons captured from the Turkish army in the War of 1828-1829. Nearby stands the 18th century Old Metropolitan Church of St. George (Biserica Sfantul Gheorghe).

ECDMFR

2026

June, 25-27
IASI, ROMANIA

The 20th European Congress of

**DentoMaxilloFacial
Radiology**

**KEYNOTE
LECTURERS**



KAAN ORHAN

*Dean & Professor of DentoMaxilloFacial Radiology
Ankara University, Faculty of Dentistry, Ankara, Turkey*

Keynote Lecture: From Classical to Modern Imaging of TMJ Lesions – Clinicoradiological Correlations, AI Advantages and Drawbacks

Introduction

Prof. Kaan Orhan is a world-renowned leader in dentomaxillofacial radiology and the application of artificial intelligence in dental imaging. As Dean of the Faculty of Dentistry and Full Professor at Ankara University, he has an outstanding scientific record: over 500 SCI publications, an h-index of 58, and more than 10,000 citations. Past President of the EADMFR and Doctor Honoris Causa of Semmelweis University (2023), he has been included on Stanford University's World Most Influential Scientists list (top 2%) since 2021.

Brief CV

- ▶ DDS (1998); PhD & Maxillofacial Radiology residency (2002) - Osaka Univ. / Ankara Univ.
- ▶ Associate Professor (2006) → Full Professor (2012), Ankara University
- ▶ Dean, Faculty of Dentistry & Dean of Research, Ankara University (since 2022)
- ▶ Vice-Rector, Ankara University
- ▶ Visiting Professor: Univ. Leuven (2018–2020), Medical Univ. Lublin, Semmelweis University
- ▶ Past President, EADMFR | Doctor Honoris Causa, Semmelweis University Budapest (2023)
- ▶ Fellow: AAOMFR, Japanese Board of DMFR, ESHNR, ESRMB
- ▶ >500 SCI publications | h-index 58 | >10,000 citations
- ▶ Editor/reviewer: >50 international journals | author of >10 books in English & Turkish
- ▶ Stanford University: World's Most Influential Scientists list (2021, top 2%)

June, 25-27
IASI, ROMANIA

The 20th European Congress of
DentoMaxilloFacial
Radiology



RUBENS SPIN-NETO

*Professor of DentoMaxilloFacial Radiology and Imaging
Department of Dentistry and Oral Health,
Aarhus University, Denmark*

Keynote Lecture: MRI in Dentistry: Challenges, Advantages and Possible Indications

Introduction

Prof. Rubens Spin-Neto is the international pioneer of dental-dedicated MRI (ddMRI), a revolutionary radiation-free approach to oral diagnostics. As Professor at the Section for Oral Radiology and Endodontics, Aarhus University, he established the world's first research centre dedicated to dental MRI, positioning Aarhus as a global hub for this emerging modality. His work focuses on evidence-based implementation of CBCT and MRI, with the long-term goal of eliminating ionising radiation from routine dental diagnosis.

Brief CV

- ▶ DDS; MS & PhD in Periodontology; PhD & dr. odont. in Oral Radiology — Aarhus University
- ▶ Professor, Section for Oral Radiology and Endodontics, Aarhus University, Denmark
- ▶ Founded the world's first dedicated dental-MRI research centre — Aarhus University
- ▶ ~175 PubMed-indexed peer-reviewed publications in dentomaxillofacial imaging
- ▶ Expertise: dental-dedicated MRI, CBCT, radiation dose reduction, implantology imaging
- ▶ International multicentre studies on ddMRI feasibility and clinical validation
- ▶ Regular invited speaker at EADMFR, IADMFR, and European Endodontic Society congresses
- ▶ Active reviewer for Dentomaxillofacial Radiology and other peer-reviewed journals



BART VANDENBERGHE

*DDS, MSc Medical Imaging, PhD | Oral & Maxillofacial Radiologist
Advimago – Centre for Advanced Oral Imaging, Brussels, Belgium*

Keynote Lecture: AI in Dentistry: A New Era in Detail
Visualization

Introduction

Dr. Bart Vandenberghe is a leading European expert in digital dental imaging and the integration of artificial intelligence in oral radiology. Founder of Advimago — the Centre for Advanced Oral Imaging in Brussels — he combines an active clinical practice with an internationally active academic and teaching career. He obtained his MSc in Dentistry at KU Leuven (2005), followed by an MSc in Medical Imaging (2007) and a PhD in Medical Sciences (2010). Member of the EADMFR central council since 2012 and Chair of its Scientific Committee, he has won research awards at IADMFR congresses.

Brief CV

- ▶ MSc Dentistry — KU Leuven (2005); MSc Medical Imaging (2007); PhD Medical Sciences (2010)
- ▶ Research Scholar: Temple Univ. Philadelphia (2005–2006) & Tufts Univ. Boston (2007)
- ▶ Visiting Assistant Professor, Dept. Diagnostic Sciences, Univ. of Maryland (2007–2008)
- ▶ Teaching: KU Leuven, University of Maryland
- ▶ Founder, Advimago — Centre for Advanced Oral Imaging & Training Centre, Brussels (2011)
- ▶ Member & Chair, Scientific Committee, EADMFR (since 2012)
- ▶ Research grant on 3D CBCT — KU Leuven, Division of Prosthetic Dentistry (2010–2015)
- ▶ 2nd Prize, IADMFR Research Award, Hiroshima, Japan (2011)
- ▶ Author/co-author of international publications; editorial board member, J Oral Maxillofac Res

June, 25-27
IASI, ROMANIA

The 20th European Congress of
DentoMaxilloFacial
Radiology



MINERVA BECKER

*MD, EBiHNR | Professor of Radiology – Head of H&N and
Maxillofacial Imaging Unit
University Hospitals of Geneva (HUG),
University of Geneva, Switzerland*

Keynote Lecture: How to Write a Great Staging Report for
Head and Neck Cancer

Introduction

Prof. Minerva Becker is one of Europe's foremost authorities in head and neck radiology and maxillofacial imaging, with particular expertise in oncological staging and multiparametric MRI. As Head of the Imaging Unit for Head, Neck and Maxillofacial Radiology at Geneva University Hospitals, she has dedicated her career to advancing the precision of imaging diagnostics for head and neck cancers. Recipient of the 2015 ESOR Best Teacher Award, she has delivered over 350 invited lectures worldwide. Past President of ESHNR and co-editor of the landmark reference work Valvassori's Head and Neck Imaging.

Brief CV

- ▶ MD — Univ. of Berne; Radiology specialisation — Insel Hospital, Berne; Research year — Duke Univ., USA
- ▶ Associate Professor (1995–2012) → Full Professor, University of Geneva
- ▶ Head, Imaging Unit for Head, Neck & Maxillofacial Radiology, HUG (since 2012)
- ▶ >200 peer-reviewed publications | >6,800 citations
- ▶ Co-editor: Valvassori's Head and Neck Imaging (leading international reference work)
- ▶ >350 invited lectures at international and national meetings
- ▶ 2015 ESOR Best Teacher Award
- ▶ Past President, ESHNR | Honorary Member, European Laryngological Society
- ▶ Former Chair, ESR Education Committee (2021–2023)
- ▶ >30 international scientific awards and prizes; multiple Swiss National Science Foundation grants
- ▶ President of ECR 2026



JAN CASSELMAN

*MD, PhD | Professor of Diagnostic Radiology
QEII Health Sciences Centre, Dalhousie University,
Halifax, Canada*

Keynote Lecture: Improving MR Imaging 3D CRANI

Introduction

Prof. Jan Casselman is a world-leading authority in imaging for otolaryngology and head & neck surgery, and a major innovator in advanced CT and MRI of the head and neck — with a particular focus on the temporal bone, inner ear, skull base, paranasal sinuses, and maxillofacial tumours. Originally from Brugge (Belgium), he completed fellowships at UCLA and the University of Florida, built an exceptional career at AZ St.-Jan Brugge, and subsequently joined Dalhousie University. Co-organiser of the Erasmus Head & Neck Course, he has authored over 240 publications and delivered more than 1,000 scientific presentations in 48 countries.

Brief CV

- ▶ MD — KU Leuven, Belgium (1983); Radiology specialisation — KU Leuven (1988)
- ▶ PhD — University of Ghent (1994)
- ▶ Fellowships in MR and Head & Neck Radiology — UCLA; University of Florida, Gainesville
- ▶ Head, MRI Department, AZ St.-Jan Hospital, Brugge, Belgium (since 1988)
- ▶ Visiting Professor, University of Vienna
- ▶ Professor, Dept. Diagnostic Radiology, QEII Health Sciences Centre / Dalhousie Univ., Canada
- ▶ Co-organiser, Erasmus Head & Neck Course (Europe's premier advanced course in this field)
- ▶ Section Editor, Neuroradiology; Associate Editor, Head & Neck Imaging, Radiology
- ▶ >240 publications | >1,000 scientific presentations in 48 countries
- ▶ Board of Directors: ESHNR; European Skull Base Society | Vice-President, ESHNR

ECDMFR

2026

June, 25-27
IASI, ROMANIA

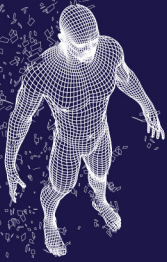
The 20th European Congress of

**DentoMaxilloFacial
Radiology**

PROGRAM

AT A GLANCE

BEYOND
VISION



NEWTOM 7G Wide.Vision

DUAL
ENERGY

Cutting-edge CBCT



NEWTOM CBCT IMAGING NOW DRAWS ON FRESH ENERGY

As of today NEWTOM 7G incorporates the Dual Energy (DE) system, elevating performance to new heights and revolutionising the way your practice operates.

Dual Energy: patented NEWTOM technology

The result of a continuous quest for patient well-being and ever-greater diagnostic precision, Dual Energy uses two different radiant energies to identify any pathologies with greater clarity and precision.

Virtual Monochromatic Images

Dual Energy technology mitigates beam-hardening artifacts. What's more, being able to reconstruct monochromatic virtual images at different keVs improves soft tissue imaging quality and reduces metal artifacts. Lastly, Dual Energy CBCT provides a basis for tissue characterisation.

Colour-coded images

NEWTOM Dual Energy software enables users to perform semi-automatic tissue segmentation and apply colour codes, streamlining the differentiation of materials within the scanned area. This allows rapid and straightforward detection of potential pathologies.

Blended image

The new features enable weighted blending of high- and low-energy imaging. The resulting images combine the low noise, typical of high-energy acquisition, with the high contrast resolution of the low-energy image set.

Featuring a large gantry aperture, the NEWTOM 7G is the most advanced CBCT device on the market. From in-depth detail to the big picture.

NEWTOM
CONE BEAM 3D IMAGING



www.newtom.it

WEDNESDAY, JUNE 24

	MAGNUM HALL	AUDITORIUM HALL
08:30 10:00	WORKSHOP: A. ULTRASONOGRAPHY IN SALIVARY GLANDS AND CERVICAL ADENOPATHY	WORKSHOP: B. DIGITAL PLANNING IN ORTHOGNATHIC SURGERY - FROM VIRTUAL SIMULATION TO SURGICAL EXECUTION
10:00 10:10	<i>Break</i>	
10:10 11:40	WORKSHOP: A. GADOVIST DOSE FLEXIBILITY IN HEAD AND NECK IMAGING EXAMINATION - CLINICAL CASES	WORKSHOP: B. PROTAPER ULTIMATE. 3 SIMPLE STEPS. PREDICTABLE RESULTS
11:40 13:10	WORKSHOP: A. HOW TO ENHANCE OUTCOME OF THE ROOT CANAL TREATMENT USING MODERN DIAGNOSTIC IMAGING?	WORKSHOP: B. SPECTRAL CT TECHNOLOGY IN HEAD AND NECK CANCER
13:10 14:00	<i>Lunch break</i>	
14:00 15:30	WORKSHOP: A. ANAPHYLACTIC REACTION TO CONTRAST AGENTS - WHAT THE RADIOLOGIST NEEDS TO KNOW	WORKSHOP: B. PREOPERATIVE ASSESSMENT AND IMPLANT DIGITAL TREATMENT PLANNING
15:30 15:40	<i>Break</i>	
15:40 17:00	WORKSHOP: A. STEP BY STEP IN PEDIATRIC HEAD AND NECK LESIONS	WORKSHOP: B. ULTRASOUND WITH SMALL HAND-HELD MACHINES IN DAILY DENTAL PRACTICE

THURSDAY, JUNE 25

	MAGNUM HALL	AUDITORIUM HALL	TRAINING II HALL
08:30 08:45	WELCOME AND INTRODUCTION		
08:45 09:30	KEYNOTE LECTURE		
09:30 10:30	OP1 SESSION: MRI	OP2 SESSION: CBCT/CT (I)	PP1 E-POSTERS SESSION: 2D-3D IMAGING
10:30 10:45	Tea and coffee break		
10:45 12:00	INTERACTIVE IMAGE READING SESSION		
	INDUSTRIAL FORUM: MORITA		
12:00 13:10	OP3 SESSION: AI (I)	OP4 SESSION: MRI/TMJ	PP2 E-POSTERS SESSION: 3D-4D IMAGING
13:10 14:00	Lunch break		
14:00 14:45	KEYNOTE LECTURE		
14:45 15:45	OP5 SESSION: AI (II)	OP6 SESSION: CBCT / CT AND MORE	PP3 E-POSTERS SESSION: CBCT / CT
15:45 16:00	Tea and coffee break		
16:00 17:00	OP7 SESSION: EADMFR RESEARCH AWARD		

FRIDAY, JUNE 26

	MAGNUM HALL	AUDITORIUM HALL	TRAINING II HALL
08:30 09:40	OP8 SESSION: 2D IMAGING	OP9 SESSION: EDUCATION / DOSE / QUALITY	PP4 E-POSTERS SESSION: ORAL & MAXILLOFACIAL SURGERY / PATHOLOGY
09:40 10:25	KEYNOTE LECTURE		
10:25 11:00	<i>Tea and coffee break</i>		
11:00 12:00	OP10 SESSION: ULTRASOUND	OP11 SESSION: REVIEWS / MISC IMAGING	11:00-12:10 PP5 E-POSTERS SESSION: ORAL & CRANIOFACIAL PATHOLOGY
12:00 13:00	KEYNOTE LECTURE		
13:00 14:00	<i>Lunch break</i>		
14:00 15:40	OP12 SESSION: ADVANCED IMAGING IN HEAD AND NECK TUMORS	OP13 SESSION: AI CHALLENGES IN DENTISTRY	15:00-15:40 PP6 E-POSTERS SESSION: ORAL & CRANIOFACIAL PATHOLOGY
15:40 15:55	<i>Tea and coffee break</i>		
15:55 17:00	OP14 SESSION: ADVANCED IMAGING IN HEAD AND NECK TUMORS	OP15 SESSION: WHAT'S NEW IN 3D IMAGING OF HEAD AND NECK LESIONS	
17:00 18:00	EADMFR GENERAL ASSEMBLY		

SATURDAY, JUNE 27

	MAGNUM HALL	AUDITORIUM HALL
08:30 10:30	OP16 SESSION: FUTURE TRENDS IN HEAD AND NECK LESIONS	OP17 SESSION: ADVANCES IN ORAL DIAGNOSTICS
10:30 11:15	KEYNOTE LECTURE	
<i>11:15</i> <i>11:30</i>	<i>Tea and coffee break</i>	
11:30 13:30	OP18 SESSION: DIAGNOSIS AND TREATMENT OF HEAD AND NECK VASCULAR LESIONS	11:30-13:25 OP19 SESSION: IMAGE-GUIDED CARE & FACIAL PAIN
13:30	Closing Remarks and Farewell	

ECDMFR

2026

June, 25-27
IASI, ROMANIA

The 20th European Congress of

**DentoMaxilloFacial
Radiology**

PROGRAM

WEDNESDAY, JUNE 24

Wednesday, June 24 2026 | 08³⁰-10⁰⁰ | Magnum Hall

WORKSHOP: A. ULTRASONOGRAPHY IN SALIVARY GLANDS AND CERVICAL ADENOPATHY

Workshop Coordinators: Corina Ursulescu Lupaşcu, Rose Ngu, Antigoni Delatoni

08:30

Ultrasound machines

10:00

Trainers: Rose Ngu, Raluca Roman, Bogdan Dobrovăţ, Corina Ursulescu, Irina Jari, Lenghel Manuela, Erick Neştianu

10:00 – 10:10 Break

Wednesday, June 24 2026 | 10¹⁰-11⁴⁰ | Magnum Hall

WORKSHOP: A. GADOVIST DOSE FLEXIBILITY IN HEAD AND NECK IMAGING EXAMINATION - CLINICAL CASES

Workshop Coordinators: Virgil Ionescu, Danisia Haba

10:10

Gadovist dose flexibility in head and neck imaging examination - Clinical cases

11:40

Trainers: Virgil Ionescu, Danisia Haba

June, 25-27
IASI, ROMANIA

The 20th European Congress of
DentoMaxilloFacial
Radiology

Wednesday, June 24 2026 | 11⁴⁰-13¹⁰ | Magnum Hall

WORKSHOP: A. HOW TO ENHANCE OUTCOME OF THE ROOT CANAL TREATMENT USING MODERN DIAGNOSTIC IMAGING?

Workshop Coordinators: Bartlomiej Karas, Ingrid Rozylo-Kalinowska

11:40
13:10

How to enhance outcome of the root canal treatment using modern diagnostic imaging?

Trainers: Bartlomiej Karas, Ingrid Rozylo-Kalinowska

13:10 – 14:00 Lunch break

Wednesday, June 24 2026 | 14⁰⁰-15³⁰ | Magnum Hall

WORKSHOP: A. ANAPHYLACTIC REACTION TO CONTRAST AGENTS - WHAT THE RADIOLOGIST NEEDS TO KNOW

Workshop Coordinators: Vlad Hârtie, Otilia Boișteanu

14:00
15:30

Anaphylactic reaction to contrast agents - What the radiologist needs to know

Trainers: Vlad Hârtie, Emilia Patrascanu, Maria Comanescu

Resuscitation guidelines – Useful aspects in the dental office

Trainers: Otilia Boișteanu, Emilia Patrascanu, Maria Comanescu

15:30 – 15:40 Break

Wednesday, June 24 2026 | 15⁴⁰-17⁰⁰ | Magnum Hall

WORKSHOP: A. STEP BY STEP IN PEDIATRIC HEAD AND NECK LESIONS

Workshop Coordinator: Coman Mariana, Oana Stanciu, Manuela Lenghel

15:40 **Step by step in pediatric head and neck lesions**

17:00 **Trainers:** Coman Mariana, Oana Stanciu, Ilinca Andreea Diana

19:00 – 19:30 WELCOMING PARTICIPANTS

**19:30 OPENING CEREMONY AND WELCOME
COCKTAIL (PALACE OF CULTURE)**

June, 25-27
IASI, ROMANIA

The 20th European Congress of
DentoMaxilloFacial
Radiology

Wednesday, June 24 2026 | 08³⁰-10⁰⁰ | Auditorium Hall

WORKSHOP: B. DIGITAL PLANNING IN ORTHOGNATHIC SURGERY - FROM VIRTUAL SIMULATION TO SURGICAL EXECUTION

Workshop Coordinators: Vlad Victor Costan, Bart Vandenberghe

08:30
10:00

Digital planning in orthognathic surgery - from virtual simulation to surgical execution

Trainers: Vlad Victor Costan, Bart Vandenberghe

10:00 – 10:10 Break

Wednesday, June 24 2026 | 10¹⁰-11⁴⁰ | Auditorium Hall

WORKSHOP: B. PROTAPER ULTIMATE. 3 SIMPLE STEPS. PREDICTABLE RESULTS

Workshop Coordinator: Sebastian Lupu

10:10
11:40

ProTaper Ultimate. 3 Simple Steps. Predictable Results

Trainer: Sebastian Lupu

Wednesday, June 24 2026 | 11⁴⁰-13¹⁰ | Auditorium Hall

WORKSHOP: B. SPECTRAL CT TECHNOLOGY IN HEAD AND NECK CANCER

Workshop Coordinator: Radtke Gesa

11:40 Spectral CT Technology in head and neck cancer

13:10 Trainer: Radtke Gesa

13:10 – 14:00 Lunch break

Wednesday, June 24 2026 | 14⁰⁰-15³⁰ | Auditorium Hall

WORKSHOP: B. PREOPERATIVE ASSESSMENT AND IMPLANT DIGITAL TREATMENT PLANNING

Workshop Coordinators: Norina Consuela Forná, Taher Adlouni

14:00 Preoperative assessment and implant digital treatment planning

15:30 Trainers: Norina Consuela Forná, Taher Adlouni

15:30 – 15:40 Break

Wednesday, June 24 2026 | 15⁴⁰-17⁰⁰ | Auditorium Hall

WORKSHOP: B. ULTRASOUND WITH SMALL HAND-HELD MACHINES IN DAILY DENTAL PRACTICE

Trainer: Antigoni Delatoni

15:40 Ultrasound with small hand-held machines in daily dental practice

17:00 Trainers: Antigoni Delatoni

ECDMFR

2026

June, 25-27
IASI, ROMANIA

The 20th European Congress of

**DentoMaxilloFacial
Radiology**

PROGRAM

THURSDAY, JUNE 25



”Better care,
more efficient
workflows,
and teamwork
without borders”

Dr. Nina Shaffie

Experience the power
of connected dentistry

dentsplysirona.com

June, 25-27
IASI, ROMANIA

The 20th European Congress of
DentoMaxilloFacial
Radiology

Thursday, June 25 2026 | 08³⁰-08⁴⁵ | Magnum Hall

WELCOME AND INTRODUCTION

Dorothea Dagassen, Danisia Haba

Thursday, June 25 2026 | 08⁴⁵-09³⁰ | Magnum Hall

KEYNOTE LECTURE

Chairmen: Dorothea Dagassen

08:45
09:30

From Classical to Modern Imaging of TMJ Lesions – Clinicoradiological Correlations, AI Advantages and Drawbacks
Kaan Orhan

Thursday, June 25 2026 | 09³⁰-10³⁰ | Magnum Hall

OPI SESSION: MRI

Chairmen: Kaan Orhan, Bogdan Dobrovăț

09:30
09:38

1. Exploring dental-dedicated MRI (DDMRI) as a radiation-free modality for comprehensive general oral health assessment: a pilot study
R. Spin-Neto, L.-L. Kirkevang, L. Hauge Matzen, G. Salatino Liedke, J. Christensen

09:38
09:46

2. MRI-based fractal analysis of the trigeminal nerve for identifying symptomatic neurovascular contacts in trigeminal neuralgia
N. Khosravifard

09:46
09:54

3. Evaluation of the relationship between mandibular third molars and the mandibular canal using magnetic resonance imaging
E. Karahan, M. Önder, C. Evli

09:54
10:02

4. Feasibility of dental-dedicated magnetic resonance imaging in the depiction of osteomyelitis and osteonecrosis-related lesions of the jaws
J. Davies, S. O'Toole, J. Hajnal, Z. Ning, K. Colford, V. Patel, O. Addisson, R. Spin Neto

<p>10:02 10:10</p>	<p>5. Lingual nerve visualization with dental-dedicated MRI: feasibility and observer reproducibility <u>R. Spin-Neto</u>, L. Hauge Matzen, J. Christensen</p>
<p>10:10 10:18</p>	<p>6. Feasibility of dental-dedicated magnetic resonance imaging in the evaluation of dental trauma in a paediatric cohort <u>J. Davies</u>, S. O'Toole, J. Hajnal, Z. Ning, K. Colford, M. Vaidyanathan, M. Kabban, O. Addisson, R. Spin Neto</p>
<p>10:18 10:30</p>	<p>Discussions</p>

10:30 – 10:45 Tea and coffee break

Thursday, June 25 2026 | 09³⁰-10³⁰ | Auditorium Hall

OP2 SESSION: CBCT/CT (I)

Chairmen: Dorothea Dagassen, Alexandru Nemțoi

<p>09:30 09:38</p>	<p>1. The role of CBCT in the localization of impacted maxillary canines and detection of incisor root resorption <u>C. Antohi</u>, R.E. Cernei, G. Zegan, L. Golovceanco, D. Anistoroaei</p>
<p>09:38 09:46</p>	<p>2. A novel CBCT-based scale for evaluating the severity of temporomandibular joint disorders <u>A.-M.-C. Arcaș</u>, A.M. Frățilă, A.-E. Cîrstian, C.-V. Arcaș, R.-E. Bîrlă-Coroiu, R.M. Manea</p>
<p>09:46 09:54</p>	<p>3. Clinical observation and consideration on the close spatial relationship between mandibular canal branches and impacted third molars <u>H. Yang</u>, W. Xu, H. Yu</p>
<p>09:54 10:02</p>	<p>4. Radiological assessment of maxillary sinusitis with emphasis on odontogenic etiology: a retrospective CBCT-based study of 36 cases <u>N. Alkhatib</u>, A. Carp, D. Sulea, A. Manolache, F. Sava, M.-L. Ciofu, O. Boisteanu, V.-V. Costan</p>

10:02 10:10	5. The role of three-dimensional imaging in children's craniofacial anomaly diagnosis and treatment planning D.M. Preda, S. Seyedin Kharrazi, S.I. Stoicescu, C. Popița, R.A. Popița, M.C. Hedeșiu, C.I. Chiriac Babei, R. Balanescu
10:10 10:18	6. From scan to smile – image-guided implants D. Alexandru Nemtoi
10:18 10:30	Discussions

10:30 – 10:45 Tea and coffee break

Thursday, June 25 2026 | 09³⁰-10³⁰ | **Training II** Hall

PPI E-POSTERS SESSION: 2D-3D IMAGING

Chairmen: Magdalena Marinescu Gava, Dragoș Epistatu

09:30 09:34	1. Development of a panoramic radiographic scoring system for dental status assessment E. Solomon, F.C. Dogioiu, M.E. Meilă, E.C. Ghiuță, I.R. Sfeatcu, D. Epistatu
09:34 09:38	2. Accuracy of Chatgpt and Gemini on Mandibular Third Molar Teeth in Panoramic Radiographs: Comparison of Uncommanded and Commanded Cases S. Aras, H. Solak, K. Demirezer, M. Kıranşal, E.N. Topaloğlu, E. Sobi, U.T. Göktürk
09:38 09:42	3. Caries Diagnosis in Panoramic Radiographs According to the ICDAS-RSS: Comparison of the Diagnostic Accuracy of LED and LCD Monitors E. Sobi, H. Solak, M. Kıranşal, E.N. Topaloğlu, S. Aras, K. Demirezer, U.T. Göktürk
09:42 09:46	4. Diagnostic Performance and Accuracy of Three AI Modalities in Assessing the Mandibular Canal Relationship E.N. Topaloğlu, E. Sobi, U.T. Göktürk, K. Demirezer, H. Solak, S. Aras, M. Kıranşal
09:46 09:50	5. Retrospective Evaluation of the Degree of Development of Third Molars Based on Orthopantomograms of Children and Adolescents Aged 5-18 Years A. Pogorzelska, M. Golebiowski, A. Grochowska, P. Regulski, A. Aluchna, K. Szopinski

09:50 09:54	6. Patient Movement and Perception of Discomfort in Children During Simulated Dental-Dedicated MRI Examination <u>A.B. Jensen, L.H. Matzen, J. Christensen</u>
09:54 09:58	7. Prevalence and Morphometric Characteristics of Fossa Navicularis Magna on Cone Beam Computed Tomography: A Retrospective Archive Study <u>U.T. Göktürk, S. Aras, E. Topaloğlu, M. Kıranşal, K. Demirezer, E. Sobi, H. Solak</u>
09:58 10:02	8. Trauma of the Viscerocranium: CT Findings and Clinical Implications <u>B.-E. Vrajitoru, R.M. Popescu, D. Haba</u>
10:02 10:06	9. Evaluation of C-Shaped Canal Variations in Mandibular Molars Using Cone-Beam Computed Tomography Images <u>H. Solak, D. Çelik Özen</u>
10:06 10:10	10. MRI Diagnosis and Monitoring of Dental Patients: Current Challenges <u>M.-R. Popescu, B.-I. Dobrovăţ, E.-A. Marciuc, D.-A. Droancă-Ilinca, D. Pomohaci, C. Chirica, I.A. Danciu, C. Antohi, I.D. Popescu, D. Haba</u>
10:10 10:14	11. AI-Based Mandibular Segmentation on Cone-Beam CT: Open-Source and Commercial Software Versus Manual Segmentation <u>O.E. Burlacu Vatamanu, S. Drafta, C.M. Cristache</u>
10:14 10:18	12. Educational Initiative: Video Materials for Learning Dental Radiology <u>D. Ivanauskaite, V. Brukiene, R. Bendinskaite, D. Janaviciene</u>
10:18 10:22	13. Radiological Evaluation as a Technical Determinant in Prosthetic Dentistry: Dentists' Perception of 2D Imaging Versus CBCT <u>D. Argatu, Irina Bamboi, Ana Nemtoi, Tinela Panaite, Adina Armencia, Ana Sirghe, Carmen Savin, Dana Budala, Teona Tudorici, Anca Rapis, Balcos Carina</u>
10:22 10:26	14. Panoramic Radiography in Pediatric Dental Practice: Diagnostic Contribution to Early Detection of Dental Pathology <u>C. Savin, C. Balcoş, F. Nanos, T. Panaite, T. Bărceanu, A. Sîrghe</u>
10:26 10:30	Discussions

10:30 – 10:45 Tea and coffee break

June, 25-27
IASI, ROMANIA

The 20th European Congress of
DentoMaxilloFacial
Radiology

Thursday, June 25 2026 | 10⁴⁵-11⁴⁵ | Magnum Hall

INTERACTIVE IMAGE READING SESSION

PLEASE **BRING YOUR SMART PHONE**

Chairmen: Eva Levring Jaghagen, Linda Zamoline Arvidsson

Thursday, June 25 2026 | 11⁴⁵-12⁰⁰ | Magnum Hall

INDUSTRIAL FORUM: MORITA

11:45 **Morita - x-ray imaging excellence for the specialists**
12:00 Simon Djerf

Thursday, June 25 2026 | 12⁰⁰-13¹⁰ | Magnum Hall

OP3 SESSION: AI (I)

Chairmen: Erwin Berkhout, Alexandru Nemțoi

12:00 **1. The accuracy of computer aided detection of periapical radiolucencies on CBCT images using artificial intelligence deep learning model**
12:08 Y. Youssef

12:08 **2. Deep learning-based prediction of impacted third molar extraction difficulty from panoramic**
12:16 F. Arab Zadeh, S. Aksoy, A. Kurbanova, K. Orhan

12:16 **3. AI-assisted automatic detection of high-risk carotid variants on cervical CT angiography: surgical implications for ENT and maxillofacial procedures**
12:24 B.I. Dobrovat, E.A. Marciuc, I.A. Danciu, R.M. Popescu, C. Chirica, D. Pomohaci, D.-A. Ilinca, D. Andres, D. Haba, I.B. Dobrovat

12:24 **4. Artificial intelligence-based severity classification of atlanto-odontoid joint osteoarthritis on cone-beam computed tomography**
12:32 H. Yalın Özdemir, A. Altındağ, Ö. Çelik, İ.Ş. Bayrakdar, K. Orhan

12:32 **5. Panoramic image quality and AI-based tooth detection: a performance analysis**
12:40 J. Issa, R. Hoogeveen, E. Berkhout

12:40 12:48	6. Segmentation of idiopathic osteosclerosis with automatic deep learning on panoramic radiographs: an artificial intelligence study M. Firincioglugari, N. Akkaya
12:48 12:56	7. Accelerating data acquisition in dental MRI with deep learning-based image reconstruction techniques C. Hayes, A. Greiser, J. Haag, J. Christensen, R. Spin-Neto
12:56 13:04	8. Dynamic TMJ MR imaging using deep-learning based image reconstruction A. Greiser, C. Hayes, J. Haag, J. Mugler, J. Christensen, R. Spin-Neto
13:04 13:10	Discussions

13:10 – 14:00 Lunch break

Thursday, June 25 2026 | 12⁰⁰-13¹⁰ | **Auditorium** Hall

OP4 SESSION: MRI / TMJ

Chairmen: Linda Arvidsson , Hedeşiu Mihaela

12:00 12:08	1. Magnetic resonance image artefacts related to restorative dental materials: a systematic literature review T. Gonzalez-Passos, M. Sampaio-Oliveira, M.L Oliveira, R. Spin-Neto
12:08 12:16	2. Beyond the teeth: incidental sellar region findings on dental-dedicated MRI G. Liedke, M. Probst, J. Christensen, L. Maracci, J. Pivetta, G. Savegnago, W. Mello, R. Spin-Neto
12:16 12:24	3. Assessing the overall performance of a dental-dedicated MRI (DDMRI) solution J. Haag, C. Hayes, A. Greiser, R. Spin-Neto, J. Christensen
12:24 12:32	4. Indications for 0.55 T low-field MRI in paediatric dentistry and orthodontics I. Willershausen, P. Hoss, A. Greiser, M. Uder, Y. Xia, M. Kopp, L. Gölz

June, 25-27
IASI, ROMANIA

The 20th European Congress of
DentoMaxilloFacial
Radiology

12:32 12:40	5. Three-Dimensional Evaluation of Condylar and Articular Eminence Morphology in Different Skeletal Malocclusions <u>A. Kurbanova</u> , Ş. Hasoğlan, S. Aksoy, K. Orhan
12:40 12:48	6. Upper Airway Morphology in Juvenile Idiopathic Arthritis: A Systematic Review and Synthesised Analysis <u>C. Lu</u> , B. Li, H. Chen, X. Feng, K. Hellén-Halme, K. Rosendahl, X.-Q. Shi
12:48 13:10	Discussions

13:10 – 14:00 Lunch break

Thursday, June 25 2026 | 12⁰⁰-13¹⁰ | Training II Hall

PP2 E-POSTERS SESSION: 3D-4D IMAGING

Chairmen: Duygu Çelik Özen, Roxana Popescu

12:00 12:04	1. Three-Dimensional Virtual Planning in Orthognathic Surgery Using Nemofab: Reproducibility and Surgical Movement Analysis Based on CBCT Data <u>A. Nemtoi</u> , A. Nemtoi, D. Haba
12:04 12:08	2. Nasopharyngeal Masses on CT: A Case-Based Review <u>R. Secara</u> , D. Haba
12:08 12:12	3. Intraoral Stereoradiography in Peri-Implant Bone Level Assessment with Virtual Reality: An In Vitro Study J. Ferreira da Costa
12:12 12:16	4. Applications of CT-Like MRI Sequences in Pediatric Maxillofacial Lesions <u>D. Dailiana</u> , L. Tzarouchi, P. Tagkalakis, G. Oikonomoulas, E. Manopoulou, G. Papaioannou
12:16 12:20	5. Le Fort Fractures on CT: A Practical Imaging Guide for Rapid Recognition <u>I. Roncea</u> , D. Haba
12:20 12:24	6. Current Diagnostic and Therapeutic Algorithms in Trigeminal Neuralgia: A Comprehensive Review <u>A. Bulgariu</u> , D. Haba, E. Fasniuc-Pereu
12:24 12:28	7. Non-Destructive Micro-CT Evaluation of the Metal–Porcelain Junction in a Zirconium-Alloy Metal–Ceramic Bridge Restoration <u>H. Amasya</u>
12:28	8. Artificial Intelligence Applications in Dento-Maxillofacial Radiology

12:32	<u>M.-R. Popescu</u> , B.-I. Dobrovăț, E.-A. Marciuc, D. Pomohaci, D.A. Droancă-Ilinca, C. Chirica, I.A. Danciu, C. Antohi, A. Capșa, D. Haba
12:32 12:36	9. Beyond Resectability: Serial Imaging as a Decision-Making Tool in Advanced Maxillary Sinus Squamous Cell Carcinoma <u>G.Oglinzanu</u> , M. Cantea, C.C. Mirestean, D.P.T. Iancu
12:36 12:40	10. Interactive 3D Visualization From CT/CBCT Data for Patient-Centered Dental Education M. Paluszny, <u>M.I. Perez Cano</u>
12:40 12:44	11. Pediatric Cervical Vascular Lesions: Imaging Clues for Differential Diagnosis <u>B.-E. Vrajitoru</u> , R.M. Popescu, D. Haba
12:44 12:48	12. Morphometric Characteristics of the Nasolacrimal Duct in Different Skeletal Malocclusion Patterns: A CBCT-Based Retrospective Study <u>G.N. Şengül</u> , B. Çetin
12:48 12:52	13. Artificial Intelligence in Dental Radiographic Screening of Athletes: Oral Disease Detection and Dental Age Estimation – A New Era for Sports Dentistry <u>G. Omar</u> , M.M. Mohamed Elsayegh
12:52 13:10	Discussions

13:10 – 14:00 Lunch break

Thursday, June 25 2026 | 14⁰⁰-14⁴⁵ | **Magnum** Hall

KEYNOTE LECTURE

Chairmen: Kaan Orhan

14:00 **MRI in Dentistry – Challenges, Advantages and Possible Indications**
14:45 Rubens Spin-Neto

Thursday, June 25 2026 | 14⁴⁵-15⁴⁵ | **Magnum** Hall

OP5 SESSION: AI (II)

Chairmen: Ingrid Rozzylo-Kalinowska, Ionuț Luchian

14:45 14:53	1. The order of AI support in the workflow of maxillofacial radiology assessment: is it more effective before or after traditional observation? <u>S. Satir</u> , O. Koca, H. Yildirim
14:53 15:01	2. Predicting dental implant failure: a multimodal deep learning approach using CBCT and clinical data T. Tran, S. Maes, T. Van Doorn, J. Meeus, Y. Sun, <u>J. Van Dessel</u>
15:01 15:09	3. Deep learning-based automated diagnostic charting on panoramic images: comparison of next-generation deep learning architectures <u>E. Aslan</u> , O. Mutlu, A. Mert
15:09 15:17	4. A multi-stage deep learning workflow for automated detection of maxillary sinusitis of endodontic origin in CBCT images O. Ayman, A. Fahmi, H. Aqabat, N. Taha, <u>S. Saber</u>
15:17 15:25	5. Automated multiclass segmentation of dentomaxillofacial structures on cone beam computed tomography <u>İ.Ş. Bayrakdar</u> , A. Kuran, M. Uğurlu, Ö. Çelik, K. Orhan
15:25 15:33	6. Chronological age estimation in dentistry using fused extraoral radiographs: a swin transformer V2-based deep regression approach S. Karacan Çelebi, Z.İ. Öztürk Barut, A.K. Yüksel, <u>H. Amasya</u> , M.S. Güzel, K. Orhan
15:33 15:45	Discussions

15:45 – 16:00 Tea and coffee break

Thursday, June 25 2026 | 14⁴⁵-15⁴⁵ | Auditorium Hall

OP6 SESSION: CBCT / CT AND MORE

Chairmen: Eva Levring Jaghagen, Bogdan Dobrovăț

14:45 14:53	<p>1. Comparison of low-, standard- and high-dose protocols of CBCT assessing anatomical landmarks and pathology related to third molars: an ex-vivo study <u>E. Rezai</u>, L.H. Matzen, L. Kaaber, L. Schropp</p>
14:53 15:01	<p>2. Knowledge distillation for fast and effective deep learning-based denoising of cone-beam computed tomography volumes <u>K. Naveed</u>, R. Pauwels</p>
15:01 15:09	<p>3. Do facial hard and soft tissue changes correlate in terms of symmetry? Long-term longitudinal analysis in a cohort with skeletal class III <u>T. Jindanil</u>, I. Tsiklin, M. Cadenas de Llano Pérula, J. Meyns, R. Cavalcante Fontenele, R. Jacobs</p>
15:09 15:17	<p>4. Evaluation of the relationship between crista galli classifications using cone-beam computed tomography S. Uzun, <u>K.N. Çakan</u>, G. Mağat</p>
15:17 15:25	<p>5. Comparison of volumetric and surface-based analyses of mandible on CBCT using two segmentation software <u>T. Yilmaz</u>, D. Yildirim, E.S. Sargin</p>
15:25 15:33	<p>6. A deep learning model for overbite assessment on intraoral scans <u>B.N. de Freitas</u>, T. Sørensen, E.V. Sparsø, C.B. Olesen, K.Ø. Noe, S. Vassis, P.B.S. Stoustrup, R. Pauwels</p>
15:33 15:41	<p>7. Three-Dimensional CBCT Evaluation of PRP-Enhanced Bone Healing in Children with Maxillofacial Clefts <u>D.M. Preda</u>, S. Seyedin Kharrazi, C. Popița, M.C. Hedeșiu, S.I. Stoicescu, R.A. Popița, B.Ș. Olteanu, R. Balanescu</p>
15:41 15:45	<p>Discussions</p>

15:45 – 16:00 Tea and coffee break

Thursday, June 25 2026 | 14⁴⁵-15⁴⁹ | Training II Hall

PP3 E-POSTERS SESSION: CBCT/CT

Chairmen: Ionuț Luchian, Danisia Haba

14:45 14:49	1. Radiographic Evaluation of Unicystic Ameloblastoma Using Cone-Beam Computed Tomography: A Case Report <u>A.S. Katsoni</u> , A. Katsonis, E. Chatzipetros
14:49 14:53	2. Anterior Buccal Mandibular Depression: Case Series E.C. Kaya, <u>S. Satir</u> , T.E. Kose
14:53 14:57	3. Localization Guided Deep Learning Segmentation of Extracranial Carotid Artery Calcifications on CBCT Images <u>B.T. Szabó</u> , M.T. Kárpáti, C. Dobó Nagy, M. Vajay, A. Manno-Kovács, C. Benedek
14:57 15:01	4. Demographic Characteristics and Comorbidity Burden in Patients with Vertebrobasilar Artery Calcification <u>K. Demirezer</u> , M. Kıranşal, U.T. Göktürk, E. Sobi, H. Solak, E.N. Topaloğlu, S. Aras
15:01 15:05	5. Segmentation and Classification of the Anterior Ethmoidal Artery on CBCT for AI-Assisted Identification in Endoscopic Sinus Surgery <u>M. Hedesiu</u> , F. Iacob, S. Eftimie, M. Coldea, P. Hedesiu, R. Jacobs, V. Trombitas
15:05 15:09	6. Evaluation of Schneiderian Membrane Thickness in Relation to Periodontal Bone Loss in Maxillary Molars Using Cone-Beam Computed Tomography D. Çelik Özen, <u>S. Aras</u>
15:09 15:13	7. Beyond Two Dimensions – The Critical Role of CBCT in Detection and Management of Root Resorption <u>Y. Decolli</u> , I.B. Dobrovat, E. Mihalas
15:13 15:17	8. MRI Features of Secondary Brain Lesions from Salivary Gland Carcinomas D. Pomohaci, M.-R. Popescu, B.-I. Dobrovat, E.-A. Marciuc, C. Chirica, I.A. Danciu, V. Ianole, G.F. Dumitrescu, D. Haba
15:17 15:21	9. The Importance of Multiple Radiological Investigations in the Diagnosis of Nasal Fractures and their Forensic Relevance <u>M.M. Diaç</u> , N. Gîrlescu, I. Hunea, A. Hlescu, D. Bulgaru Iliescu

15:21 15:25	10. Selective Use of CBCT in Pediatric Dentistry: Balancing Guideline Recommendations and the Need for Early Diagnosis <u>A. Sirghe</u> , T. Panaite, L. Gavrilă, C. Balcoş, T. Bărceanu, E. Mihalaş, C. Savin
15:25 15:29	11. When Eruption Fails: Imaging Features of Pathological Eruption of Permanent Teeth <u>A. Sirghe</u> , C. Savin, C. Balcos, D. Haba, T. Panaite
15:29 15:33	12. Navigating the Parotid Gland: A Multimodal Radiological Approach of Nodular Lesions <u>D.-A. Droanca-Ilinca</u> , I.A. Danciu, C. Chirica, D. Pomohaci, E.A. Marciuc, R.M. Popescu, B.I. Dobrovat, D. Haba
15:33 15:37	13. Imaging-Based Diagnostic Approach to Osteolytic Lesions of the Jaw: Differentiating Benign Tumors from Malignant Entities <u>I.A. Danciu</u> , B.I. Dobrovat, E.A. Marciuc, R.M. Popescu, A.-D. Droanca-Ilinca, C. Chirica, D. Pomohaci, N. Dobrin, L. Eva, D. Haba
15:37 15:41	14. CBCT - Guided Planning of Pterygoid Implants: Educational Insights into the Pterygomaxillary Region <u>D. Andres</u> , B. Dobrovat, C. Chirica, E. Marciuc, I. Danciu, A. Ilinca Droanca, R. Popescu, D. Pomohaci, D. Haba
15:41 15:45	15. The Role of CBCT in Improving the Endodontic Management of C-Shaped Radicular Canals <u>Y. Decolli</u> , I.B. Dobrovat, E. Mihalas, L. Aminov
15:45 15:49	16. Prevalence and Spectrum of Incidental Findings on Dental Cone-Beam CT: A Retrospective Imaging Study <u>T.-A. Buznea</u> , D. Haba

Thursday, June 25 2026 | 16⁰⁰-17⁰⁰ | **Magnum** Hall

OP7 SESSION: EADMFR RESEARCH AWARD


Chairmen: Dorothea Dagassen, Kaan Orhan, Rose Ngu, Bart Vandenberghe

16:00 16:10	1. Does CBCT Dose Reduction Affect AI - Based Mandibular Segmentation Accuracy? An Ex Vivo Study <u>L. Kaaber</u> , L. Schropp, R. Pauwels, R. Spin-Neto, L. Hauge Matzen
16:10 16:20	2. Do Artefacts from Dental Implants Impair the Diagnosis of Simulated Internal Root Resorption in Cone-Beam Computed Tomography? <u>M. Sampaio-Oliveira</u> , F.B. Fagundes, L.E. Marinho-Vieira, R. Spin-Neto, M.L. Oliveira
16:20 16:30	3. Radiographically and Anatomically Accurate Patient-Specific 3D-Printed Maxillofacial Phantom for Imaging Research <u>N. Oliveira-Santos</u> , S. Bracher, P. Wili, P. Zysset, R. Schulze
16:30 16:40	4. Artificial Intelligence for Caries Detection in Primary and Permanent Teeth: A Crossover Randomized Controlled Trial <u>F. Dağdeviren</u> , E. Berkhout, C. Serrano
16:40 16:50	5. Learning to See Better: The Impact of AI-Assisted Dental Charting in Dental Education <u>R.S. Gracea</u> , Y.-H. Li, D. Papasratorn, L. Etiennot, R.C. Fontenele, R. Jacobs
16:50 17:00	6. Patient Radiation Dose in Panoramic Radiography: How far Have We Come? <u>D. Papasratorn</u> , D.M. Brasil, K. Merken, J. Binst, R. Pauwels, H. Bosmans, F. Haiter Neto, R. Jacobs

Romexis®

Everything you need in one software




AI always
included

Romexis® is the only software you need for maxillofacial imaging. It offers a rich selection of tools and features for all needs and specialities, supporting both 2D and 3D imaging as well as treatment planning. Powered by AI, Romexis optimises daily tasks, streamlines treatment planning and boosts patient communication.

planmecca.com/romexis

PLANMECCA

ddi
derom dental
international

KAVO
Dental Excellence

ECDMFR

2026

June, 25-27
IASI, ROMANIA

The 20th European Congress of

**DentoMaxilloFacial
Radiology**

PROGRAM

FRIDAY, JUNE 26



Less is More

Gadovist® poate fi utilizat la o doză minimă de 0,075 mmol/kg GC în imagistica SNC**

- Mai multă flexibilitate în examinările SNC^{1,2}
- Opțiuni extinse de dozare^{1,2}



Gadovist® 1.0

Gadobutrol

Gadovist® 1,0 mmol/ ml soluție injectabilă
Pentru informații suplimentare consultați
Rezumatul Caracteristicilor Produsului scanând
codul QR alăturat:



1. Liu B et al. Clinical Efficacy of Reduced-Dose Gadobutrol Versus Standard-Dose Gadoterate for Contrast-Enhanced MRI of the CNS: An International Multicenter Prospective Crossover Trial (LEADER-75). AJR Am J Roentgenol. 2021;217(5):1195–1205.

2. RCP

* greutate corporala

Acest material promoțional este destinat profesioniștilor din domeniul sănătății. Profesioniștii din domeniul sănătății sunt încurajați să raporteze evenimentele adverse apărute la pacienții care utilizează Gadovist®, către Agenția Națională a Medicamentului și a Dispozitivelor Medicale din România, Str. Aviator Sănătescu nr.48, sector 1, București 011478-RO, Website: www.anm.ro, e-mail: adr@anm.ro sau către reprezentanța locală a deținătorului autorizației de punere pe piață: Bayer SRL, Tel: + 40 21 528 59 09; e-mail: pharmacovigilance_romania@bayer.com.

Medicament eliberat pe baza de prescripție medicală - PR. PP-GAD-RO-0035-1

Friday, June 26 2026 | 08³⁰-09⁴⁰ | **Magnum** Hall

OP8 SESSION: 2D IMAGING

Chairmen: Eva Levring Jaghagen, Monica Tatarciuc

08:30 08:38	1. Multi-class anatomical landmark detection in periapical radiographs with deep learning <u>F. Buyuk</u> , A. Saruhan, F. Yuce, O. Celik, E. Bilgir, I.S. Bayrakdar
08:38 08:46	2. Impact of bruxism on mandibular condylar structures: a radiomics-based panoramic radiographic analysis K. Dinç Başar, <u>S. Uzun</u> , G. Mağat
08:46 08:54	3. Mandibular trabecular bone alterations in breast cancer patients: a fractal analysis of panoramic radiographs <u>Y. Oztoprak</u> , K. Aydin, A. Tas, M.I. Oztoprak, T. Celikkol, D. Sumer
08:54 09:02	4. Investigation of changes in the mandible in female patients with Hashimoto's thyroiditis F. Aşantoğrol, A. Artaş, <u>M.Ş. Çelebi</u> , S. Koyuncu
09:02 09:10	5. Frankfort-mandibular plane angle assessment on panoramic radiographs: perspectives on AI-assisted analysis <u>M.E. Meilă</u> , D. Epistatu, A.D. Safta, F. Dogioiu, C. Ghiuță, E. Solomon, M.T. Epistatu
09:10 09:18	6. Bisected angle and paralleling techniques with portable radiographic equipment using 0° vertical angulation <u>E. Parraguez</u> , C. Baltera, A.M. Rodriguez
09:18 09:26	7. Diagnostic reliability after education in detection of carotid artery calcifications on panoramic radiographs <u>M. Bladh</u> , N. Gustafsson, E. Levring Jäghagen
09:26 09:40	Discussions

Friday, June 26 2026 | 08³⁰-09⁴⁰ | Auditorium Hall

OP9 SESSION: EDUCATION / DOSE / QUALITY

Chairmen: Ruben Pauwels, Erwin Berkhout

08:30 08:38	1. Dentihub: an AI-integrated platform for dental education and research S. Eftimie, L. Iacob, E. Olariu, R. Pop, L. Dioşan, R. Roman, A. Ban, R. Jacobs, M. Hedeşiu
08:38 08:46	2. Effect of AI-assisted decision support on dental students' radiographic diagnosis of caries A. Delantoni, I. Siska, S. Davidopoulou, F. Dovinou, D. Dionysopoulos, K. Tolidis
08:46 08:54	3. Diagnostic accuracy of a commercial AI-based platform in evaluating radiographic quality of root canal obturation on periapical radiographs A. Delantoni, E. Papadopoulou, M.E. Kalaitzoglou, A. Fardi, K. Kodonas, N. Economides
08:54 09:02	4. Impact of simulation radiography training on X-ray positioning ability: a pilot study M. Rodak, J. Mikołajczak, M. Bobrowska, T. Kulczyk, M. Dyszkiewicz Konwińska
09:02 09:10	5. Influence of image processing and file format on the diagnostic output of a commercial dental AI system (Diagnocat): a controlled robustness study D. Apostolakis, G. Michelinakis
09:10 09:18	6. Foetal dose of cone-beam computed tomography: a comprehensive Monte Carlo evaluation R. Pauwels
09:18 09:26	7. Challenges in dosimetry protocols for dental radiology G. Manousaridis, C.J. Hourdakis, E. Carinou
09:26 09:34	8. Evaluating the methodological quality of dental CBCT DRLs: a systematic review B. Arunmani, M. McGuigan, I. Fleischmann, K.K. Horner, R. Coleman
09:34 09:40	Discussions

Friday, June 26 2026 | 08³⁰-09⁴⁰ | **Training II** Hall

PP4 E-POSTERS SESSION: ORAL & MAXILLOFACIAL SURGERY / PATHOLOGY

Chairmen: Kaan Orhan, Daniel-Claudiu Malita

08:30 08:34	1. Epidermal Cyst in the Dentomaxillofacial Region – Case Report <u>O. Koca</u> , G. Karaeminogullari, S. Acat, S. Satir, B. Erdogan
08:34 08:38	2. Neck Paraganglioma – Multimodal Imaging Diagnostic Approach <u>C.R. Stolniceanu</u> , C. Preda, D. Haba, C. Stefanescu
08:38 08:42	3. Maxillomandibular Fibrous Dysplasia Mimicking Paget's Disease <u>M.I. Akçay</u> , M. Kırınçal
08:42 08:46	4. Arrested Pneumatization of the Sphenoid Sinus Mimicking Skull Base Lesions: A Case Report C. Görürgöz
08:46 08:50	5. Surviving Head and Neck Emergencies on Call – What the Radiologist Should Not Miss <u>D.-A. Droanca-Ilinca</u> , I.A. Danciu, R.M. Popescu, B.I. Dobrovat, E.A. Marciuc, D. Pomohaci, C. Chirica, D. Haba
08:50 08:54	6. CT Signs of Odontogenic Maxillary Sinusitis: Clues to Dental Origin and Anatomical Aspects that may be Overlooked A. Alec, A.-M. Ungureanu, <u>D.-C. Malita</u>
08:54 08:58	7. The Trigeminal Highway: Mapping Retrograde Perineural Spread and Systemic Metastasis in a Rare High-Grade Nasopharyngeal Adenoid Cystic Carcinoma <u>A.-A. Nistor</u> , G. Bugean, A. Lenta
08:58 09:02	8. Calvarial Metastases from Prostate Cancer: Scintigraphic Detection and CT Correlation – A 6-Year Retrospective Study <u>B. Catargiu</u> , A. Nistor, G. Bugean, D.T. Iancu, A. Munteanu
09:02 09:06	9. Cone-Beam Computed Tomography in the Surgical Management of Submandibular Sialolithiasis <u>D. Sulea</u> , F. Sava, A. Carp, A. Manolache, S. Stelea, V. Salceanu, S. Gherasimescu, A. Nicolau, M.L. Ciofu, O. Boisteanu, V.V. Costan

09:06 09:10	10. Radiologic Study Regarding Some Measurable Variables in Immediate Loading Dental Implants D. Epistatu, M.E. Meila, F. Dogioiu, C. Ghiuta, E. Solomon, M.T. Epistatu
09:10 09:14	11. Radiological Features of Ameloblastoma: A CBCT - Based Educational Review D. Andres, B. Dobrovat, D. Paduraru, I. Danciu, A. Ilinca Dronca, R. Secara, A.M. Botez, D. Haba
09:14 09:18	12. Ultrasound in Idiopathic Unilateral Masseter Hypertrophy L. Romo, E. Parraguez, C. Baltera
09:18 09:40	Discussions

Friday, June 26 2026 | 09⁴⁰-10²⁵ | **Magnum** Hall

KEYNOTE LECTURE

Chairmen: Rose Ngu

09:40 10:25	AI in Dentistry – A New Era in Detail Visualization Bart Vandenberghe
------------------------------	---

10:25 – 11:00 Tea and coffee break

Friday, June 26 2026 | 11⁰⁰-12⁰⁰ | **Magnum** Hall

OP10 SESSION: ULTRASOUND

Chairmen: Rose Ngu, Raluca Roman

11:00 11:08	1. Evaluation of the reliability of panoramic radiography in the diagnosis of carotid artery calcification using ultrasonography M. Edik, Z.F. Sönmez, B. Canpolat, M. Etöz, A. Çukurluoğlu
11:08 11:16	2. Disinfection practices in intraoral ultrasonography: a comparative survey study Ü. Aydın, N. Bağcı, İ. Peker, D. Kaymak, B. İncebeyaz
11:16 11:24	3. The impact of dominant-side trapezius massage on masseter hemodynamics: a Doppler ultrasonography study G. Haksayar, F. Gülcan, N. Karataş, C. Evli, M. Önder, K. Orhan, M. Eray Kolsuz
11:24 11:32	4. Diagnostic utility of interval ultrasound screening using OMERACT scoring for MALT lymphoma in Sjögren's disease: a 19-year retrospective analysis C. Zerafa, B. Thomas, J. Davies
11:32 11:40	5. Imaging evaluation of inflammatory pathology associated with erupted third molars C. Harasim, D. Şulea, A. Carp, A. Manolache, O. Boişteanu, F. Sava, A. Nicolau, L. Cîrlescu, V. Sălceanu, V.V. Costan
11:40 11:48	6. Ultrasonographic Evaluation of Cervical Lymph Node in Patients with Oral Cavity Cancer Manuela Lenghel
11:48 12:00	Discussions

Friday, June 26 2026 | 11⁰⁰-12⁰⁰ | Auditorium Hall

OPTI SESSION: REVIEWS/MISC IMAGING

Chairmen: Carmen Savin, Bart Vandenberghe

11:00 11:08	1. Incidental findings on cone-beam CT in dental imaging: prevalence, clinical significance, and reporting gaps—an updated systematic review (2018–2025) O. Baydar
11:08 11:16	2. Impact of implant artifacts on radiomorphometric trabecular bone measurements B. Sen, A. Mert, B.G. Baksi
11:16 11:24	3. Frontal sinusitis gone wrong: multimodality imaging of Pott's puffy tumor with intracranial complications A.-M. Botez, E. Marciuc, R. Popescu, A. Droanca-Ilinca, I. Danciu, D. Haba
11:24 11:32	4. Small findings, big consequences: neurovascular implications of maxillofacial trauma E.A. Marciuc, B.I. Dobrovat, M.R. Popescu, D. Pomohaci, C. Chirica, I. Danciu, D.-A. Ilinca, D. Haba
11:32 11:40	5. Chondroblastic osteosarcoma of anterior mandible: a case report N. Deniz, A.S. Tanrıvermiş, S. Gün, A.Z. Zengin
11:40 11:48	6. Small black holes in the jaws and other CBCT findings suggestive of multiple myeloma A. Katsonis, A.S. Katsonis, E. Katsonis
11:48 11:56	7. The intraventricular incidentaloma: a diagnostic detour in ENT imaging D. Padurarau, G. Garcia, S. Ammari, C. Balleyguier, F. Bidault
11:56 12:00	Discussions

Friday, June 26 2026 | 11⁰⁰-12¹⁰ | Training II Hall

PP5 E-POSTERS SESSION: ORAL & CRANIOFACIAL PATHOLOGY

Chairmen: Csaba Dobo-Nagy, Victor Vlad Costan

11:00 11:04	1. Acromegaly Diagnosed by a Dentist: A Case Report <u>Y. Öncü</u> , A.Z. Zengin
11:04 11:08	2. Discovery of Novel FGFR1 Inhibitors for OSCC Using a Multi-Class QSAR Model, Virtual Screening, And Molecular Dynamics Simulations S. Udeabor, <u>H. Assiri</u> , M. Ishfaq, R. Al-Hammad, N. Al hussain, S. Shah, I. Khalid, F. Baig, M. Hamid, A. Elfadeel, C. Onwuka
11:08 11:12	3. Squamous Cell Carcinoma of Posterior Maxilla: A Case Report <u>N. Deniz</u> , P. Çelenk
11:12 11:16	4. Unlocking The Oropharynx: A Multimodality Imaging Review of 12 Base of Tongue Lesions <u>C. Chirica</u> , B.-I. Dobrovăț, D. Pomohaci, S.-I. Chirica, M.-R. Popescu, E.-A. Marciuc, I.A. Danciu, D. Andreș, D.A. Droancă-Ilinca, D. Haba
11:16 11:20	5. Facial Pain Beyond Odontogenic Disease: Imaging Clues for Differential Diagnosis in Head and Neck Pathology I.A. Serpeanu
11:20 11:24	6. Imaging Phenotypes of Temporomandibular Joint Disorders are Underpinned by Distinct Proteomic and Metabolomic Trajectories in Synovial Fluid L. Wang, B. Li, <u>Y. Cheng</u>
11:24 11:28	7. Beyond Sialadenitis: CT and MRI Patterns of Salivary Gland Lesions <u>T.-A. Buznea</u> , D. Haba
11:28 11:32	8. How Far Can It Spread? From Head and Neck Carcinomas to Brain Metastases D. Pomohaci, M.-R. Popescu, B.-I. Dobrovat, E.-A. Marciuc, C. Chirica, I.A. Danciu, V. Ianole, G.F. Dumitrescu, D. Haba
11:32 11:36	9. Micro-CT Radiomics and Machine Learning Reveal PLCF2-Dependent Skull Malformations in Mice <u>C. Dobo-Nagy</u> , F. Juhasz, B. Szabo, K. Orhan
11:36 11:40	10. "Not Just a Swelling": Intraosseous Hemangioma of The Mandible Revealed by Multimodal Imaging in Two Pediatric Cases <u>G. Haksayar</u> , Z.İ. Öztürk Barut, D. Sezgin, C. Evli, K. Orhan

11:40 11:44	11. Impact of Ultrasonography-Assisted Training of Cervical Lymph Node Examination on Dental Education D. Yildirim, E. Bozdemir, O. Gormez, O. Yarbasi
11:44 11:48	12. Imaging Pearls and Pitfalls in Osteosclerotic Lesions of the Jaws: A Case-Based Survival Guide for Differential Diagnosis I.A. Danciu, E.A. Marciuc, B.I. Dobrovat, R.M. Popescu, A.D. Droanca-Ilinca, C. Chirica, D. Pomohaci, N. Dobrin, L. Eva, D. Haba
11:48 11:52	13. AI vs Human Experts in Odonto-Periodontal Diagnosis on Orthopantomograms: A Comparative Study O.-M. Butnaru, D. Vasincu, I. Mârțu, I. Luchian, D. Haba
11:52 11:56	14. Contribution of Turkish Researchers to the World's Dentomaxillofacial Radiology Literature: A 20-Year Analysis U. Seki, U. Aksoy, S. Aksoy, A. Altındag, C. Gorurgoz, K. Orhan
11:56 12:00	15. Patient Perception of Radiation Risk in Dental Imaging and the Role of Education in the Acceptance of Preventive Radiographic Examinations C. Balcos, B. Carina, I. Bamboi, A. Nemtoi, T. Panaite, A. Armencia, B. Toader, A. Sirghe, C. Savin, T. Tudorici, A. Rapis, D. Argatu
12:00 12:04	16. CBCT - Guided Planning of Pterygoid Implants: Educational Insights into the Pterygomaxillary Region D. Andres, B. Dobrovat, C. Chirica, E. Marciuc, I. Danciu, A. Ilinca Droanca, R. Popescu, D. Pomohaci, D. Haba
12:04 12:10	Discussions

Friday, June 26 2026 | 12⁰⁰-13⁰⁰ | **Magnum** Hall

KEYNOTE LECTURE

Chairmen: Ioana Cheonea

12:00
13:00 **How to Write a Great Staging Report for Head and Neck Cancer**
Minerva Becker

13:00 – 14:00 Lunch break

June, 25-27
IASI, ROMANIA

The 20th European Congress of
DentoMaxilloFacial
Radiology

Friday, June 26 2026 | 14⁰⁰-15⁴⁰ | Magnum Hall

OP12 SESSION: ADVANCED IMAGING IN HEAD AND NECK TUMORS

Chairmen: Minerva Becker, Jan Casselman

14:00 14:20	1. What's New with the 9th TNM Classification in the Head and Neck? François Bidault
14:20 14:40	2. Advanced Imaging Techniques in Salivary Gland Tumors Farida Benoudiba
14:40 15:00	3. HPV Status and the Oropharynx Cancer: What's New and What Matters François Bidault
15:00 15:20	4. Perineural Extension of the Primary Head and Neck Tumors - a Diagnostic Challenge Virgil Ionescu
15:20 15:30	Panel Discussion
15:30 15:40	Industry Forum: Philips MRI Head & Neck Tumor

15:40 – 15:55 Tea and coffee break

Friday, June 26 2026 | 14⁰⁰-15⁴⁰ | Auditorium Hall

OPI3 SESSION: AI CHALLENGES IN DENTISTRY

Chairmen: Bence Tamas Szabo, Norina Consuela Forna

14:00 14:15	1. AI for Dental Charting and Open AI Lola Gracea
14:15 14:45	2. AI in Implantology Norina Consuela Forna
14:45 15:00	3. 3D Virtual Patient Por Jindanil
15:00 15:20	4. AI in Pediatric Dentistry Carmen Savin, Ana Sirghe
15:20 15:40	Panel Discussion

15:40 – 15:55 Tea and coffee break

Friday, June 26 2026 | 15⁰⁰-15⁴⁰ | **Training II** Hall

PP6 E-POSTERS SESSION: ORAL & CRANIOFACIAL PATHOLOGY

Chairmen: Dennis Rottke, Ionut Luchian

15:00 15:04	1. High-Grade Chondroblastic Osteosarcoma of the Orbit – Case Report <u>I. Reut</u> , D. Haba
15:04 15:08	2. Diagnosis of Anaplastic Meningioma with Subsequent Transformation to Glioblastoma: A Case Report <u>M. Cantea</u> , G. Oglinzanu, C.C. Mirestean, D.P.T. Iancu
15:08 15:12	3. When Infection Crosses the Barrier: Radiological Spectrum of Intracranial Extension from Head and Neck Sources <u>D.-A. Droanca-Ilinca</u> , I.A. Danciu, R.M. Popescu, E.A. Marciuc, B.I. Dobrovat, D. Pomohaci, C. Chirica, D. Haba
15:12 15:16	4. Extensive CNS Metastases from Gastric Adenocarcinoma Presenting with Facial Pain – Unusual Dissemination Pattern on Multiparametric MRI <u>V. Blaga</u> , G. Oglinzanu, M. Virtea, C. Mirestean
15:16 15:20	5. Intraosseous Schwannoma – A Case Report <u>I. Ilie</u> , B. Vrajitoru, D. Haba
15:20 15:24	6. An Ectopic Tooth with Periapical Cemental Dysplasia in the Mandibular Condyle: A Case Report with Cone-Beam Computed Tomography Images <u>Y. Öncü</u> , A.Z. Zengin
15:24 15:28	7. An Imaging Puzzle: Ectopic Papillary Thyroid Carcinoma and Brain Metastases <u>D. Pomohaci</u> , M.-R. Popescu, B.-I. Dobrovat, E.-A. Marciuc, C. Chirica, V. Ianole, G.F. Dumitrescu, D. Haba
15:28 15:32	8. The Importance of Dentomaxillofacial Radiology in Forensic Cases <u>M.M. Diac</u> , N. Gîrlescu, I. Hunea, A.A. Hlescu, D. Bulgaru Iliescu

15:32
15:36

**9. Level of Knowledge and Attitudes Among Dentists Regarding the Use of
CBCT in Dental Practice**

D.A. Lipsa, D. Haba, B.I. Dobrovăț, C.B. Balcoș

15:36
15:40

**10. Diagnostic Accuracy of Low-Dose CBCT Protocols in the Detection of
Artificial Periapical Lesions: An Ex Vivo Study**

I.B. Dobrovat, Y. Decolli, C. Antohi, B.I. Dobrovat

15:40 – 15:55 Tea and coffee break

Friday, June 26 2026 | 15⁵⁵-17⁰⁰ | **Magnum** Hall

OPI4 SESSION: ADVANCED IMAGING IN HEAD AND NECK TUMORS

Chairmen: François Bidault, Farida Benoudiba

15:55 16:03	1. Dental Implant Strategies in the Presence of Maxillary Sinus Mucous Retention Cysts X. Li, H. Wang
16:03 16:11	2. Retromolar Canal Characteristics in a Turkish Cypriot Population: CBCT Study M. Beyköylü
16:11 16:19	3. Intraoperative Surgical Navigation Is as Effective as Conventional Surgery for Zygomaticomaxillary Complex Fracture Reduction: META-ANALYSIS M. Banarescu, B. Golzio Navarro Cavalcante, B. Szabo, P. Hegyi, G. Gerber, V.V. Costan
16:19 16:27	4. Oral Cavity and Oropharyngeal Squamous Cell Carcinoma: A Review of Imaging Findings Erick Neştianu, François Bidault, Gabriel Garcia
16:27 16:35	5. Management of Medication-Related Osteonecrosis of the Jaw: Current Strategies for Diagnosis and Treatment I.-A. Grigoras, C. Harasim, L. Cirlescu, A. Manolache, M.-L. Ciofu, A. Carp, D. Sulea, R. Dragomir, D. Agop Forna, V.-V. Costan
16:35 16:43	6. Maxillomandibular Advancement: Bridging Facial Aesthetics and Airway Function S.-O. Stelea, F.-P. Sava, A. Manolache, E.-P. Stelea, A.-L. Platon, O. Butnaru, D. Sulea, D. Vasincu, V.-V. Costan
16:43 16:51	7. Odontogenic Cysts with Sinus Evolution: Evaluation of Modern Diagnostic and Treatment Methods L.-E. Cirlescu, A. Carp, D. Şulea, A. Manolache, F. Sava, A. Nicolau, C. Harasim, V. Sălceanu, O. Boişteanu, V.V. Costan
16:51 17:00	Discussions

17:00 – 18:00 EADMFR General Assembly

Friday, June 26 2026 | 15⁵⁵-17⁰⁰ | Auditorium Hall

OPI5 SESSION: WHAT'S NEW IN 3D IMAGING OF HEAD AND NECK LESIONS

Chairmen: Elisa Parraguez, Cristina Antohi

15:55 16:03	1. Exploring Mandibular Sexual Dimorphism Using 3D CBCT Reconstructions: a Promising Radiological Approach N. Christoloukas, <u>A. Mitsea</u> , L. Kovatsi, C. Angelopoulos
16:03 16:11	2. Pre-procedural Anxiety in Dental Radiology: a Comparison Between Orthopantomography and Cone Beam Computed Tomography <u>S. Telsiz</u> , A. Pınarbaşı, A. Çukurluoğlu
16:11 16:19	3. Deep Learning Applications in Cone-Beam Computed Tomography for Maxillary Sinus Pathology: a Systematic Review <u>V. Venianakis</u> , N. Christoloukas, A. Mitsea, C. Angelopoulos
16:19 16:27	4. Why CBCT in Endodontology? Diagnostic Advantages in Odontogenic Sinusitis and Periapical Lesions <u>C. Antohi</u> , M. Salceanu, A.C. Concita, T. Hamburda, C.L. Giuroiu, R.E. Cernei, R.M. Popescu, B.I. Dobrovat, I. Nica, A. Gheorghe, G. Pancu, C. Topoliceanu
16:27 16:35	5. The Role of PET/CT in Evaluating Imaging Characteristics of Hodgkin Lymphoma with Maxillofacial and ENT Involvement <u>C. Antohie</u> , D. Haba, A.I. Diana, D. Chetan
16:35 16:43	6. PET/CT Imaging Aspects in non-Hodgkin Lymphomas of the Head and Neck <u>D. Chetan</u> , C.M. Antohie, R. Popescu, D. Haba
16:43 16:51	7. Anatomical Relationship of Elongated Styloids on CBCT Scans: Validation of Diagnostic Landmarks for Small-Field Studies S. Jaureguy
16:51 17:00	Discussions

17:00 – 18:00 EADMFR General Assembly - Magnum Hall

ECDMFR

2026

June, 25-27
IASI, ROMANIA

The 20th European Congress of

**DentoMaxilloFacial
Radiology**

PROGRAM

SATURDAY, JUNE 27

Better care for more people advanced imaging based on Artificial Intelligence

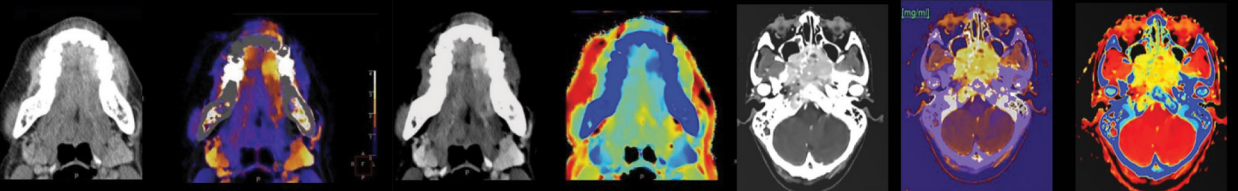
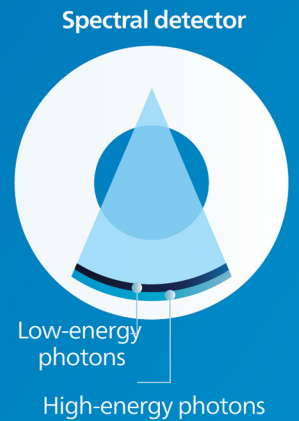
1,5T and 3T Helium free MRI with ultra-clear images

BlueSeal Horizon, the first and only AI-powered 3T helium-free MRI system, enables you to acquire ultra-clear images in just seconds, not minutes.



Spectral CT Imaging

Enhance diagnostic accuracy in orthopedics by using Spectral CT imaging for every patient. With artificial intelligence powering the entire imaging chain—from the Prism Precise Spectral NanoPanel Detector to the Spectral Precise Image Engine—this CT system delivers fast, reliable, and precise results through an efficient workflow, with the ability to review spectral results directly within PACS.



June, 25-27
IASI, ROMANIA

The 20th European Congress of
DentoMaxilloFacial
Radiology

Saturday, June 27 2026 | 08³⁰-10³⁰ | Magnum Hall

OP16 SESSION: FUTURE TRENDS IN HEAD AND NECK LESIONS

Chairmen: Ingrid Rozylo-Kalinowska, Farida Benoudiba

08:30 09:10	1. CBCT and MRI Value in Visualizing Paranasal Sinuses and Maxillofacial Tumors Jan Casselman
09:10 09:30	2. Update on Odontogenic Cysts and Tumors Ingrid Rozylo-Kalinowska
09:30 09:50	3. Treatment of Jaw Cysts from Conservative Approaches to Radical Surgery Victor Costan
09:50 10:10	4. Imaging Approach to Trigeminal Neuralgia and Neuropathic Facial Pain Farida Benoudiba
10:10 10:30	5. Augmented Reality and Digital Facial Nerve Tracing: The New Standard in Personalized Parotid Surgery in the AI Era Rares Mocan, Sebastian Stoia, Tiberiu Tămaș, Mihaela Baciut, Simion Bran, Mihaela Hedesi, Manuela Lenghel, Cristian Dinu

Saturday, June 27 2026 | 08³⁰-10³⁰ | Auditorium Hall

OP17 SESSION: ADVANCES IN ORAL DIAGNOSTICS

Chairmen: Dorothea Dagassen, Sorina Solomon

08:30 08:50	1. Use of CBCT to Limit Periodontal Iatrogenic Effects Olivier Sorel
08:50 09:10	2. Redefining Dental and Periodontal Imaging through Artificial Intelligence and Precision Diagnostics Ionut Luchian
09:10 09:25	3. Imaging Diagnostic in Endodontic Lesions Mihaela Salcean
09:25 09:45	4. Considerations on Orthodontic Diagnostic Methods Irina Zetu, Cristian Romanec
09:45 10:00	5. AI-Assisted, Clinician-Led: The Path to Excellence in Oral Diagnosis Nora Saif
10:00 10:15	6. A Multi-Stage Deep Learning Workflow for Automated Detection of Maxillary Sinusitis of Endodontic Origin in CBCT Images O. Ayman, A. Fahmi, H. Aqabat, N. Taha, S. Saber
10:15 10:30	7. Clinical-Imaging Correlations in the Diagnosis and Treatment of Different Stages of Periodontitis Sorina Solomon

Saturday, June 27 2026 | 10³⁰-11¹⁵ | Magnum Hall

KEYNOTE LECTURE

Chairmen: Reihilde Jacobs

10:30
11:15 **Improving MR Imaging 3D CRANI**
Jan Casselman

11:15 – 11:30 Tea and coffee break

Saturday, June 27 2026 | 11³⁰-13³⁰ | **Magnum** Hall

OP18 SESSION: DIAGNOSIS AND TREATMENT OF HEAD AND NECK VASCULAR LESIONS

Chairmen: Dennis Rottke, Bogdan Popa

11:30 11:50	1. The Multidisciplinary Management of Glomus Tumors Ioana Badea, Costin Minoiu, Laurențiu Gulie, George Pană, Bogdan Popa
11:50 12:10	2. Pediatric Oro-Maxillofacial and Head and Neck Emergencies Cristina Gheorghisor Bulgaru, Bogdan Olteanu
12:10 12:30	3. The Role of Direct Puncture in the Preoperative Embolization of Glomus Tumors Cristian Mihalea, Bogdan Popa
12:30 12:50	4. Endovascular and Surgical Management of Vascular Lesions: the Neurosurgery Perspective Nicolae Dobrin, Alexandru Chiriac, Lucian Eva, Ana Maria Dobrin
12:50 13:10	5. Aneurysmal Bone Cyst of the Jaws – A Therapeutic Challenge Victor Costan
13:10 13:30	6. Updated MRI Protocols for Angiography in H&N Region Cosmin Niscoveanu, Andrei Baz, Radu Baz

13:30 **Closing Remarks and Farewell**

Saturday, June 27 2026 | 11³⁰-13²⁵ | Auditorium Hall

OP19 SESSION: IMAGE-GUIDED CARE & FACIAL PAIN

Chairmen: Danisia Haba, Valeriu Fala

11:30 11:50	1. Clinical and Imaging Indices in the Diagnosis of Temporomandibular Disorders Gheorghe Bordeniuc, Valeriu Fala
11:50 12:10	2. Digital and Clinical Advances in the Diagnosis of TMJ Disorders in Patients with Extensive Partial Edentulism Magda Ecaterina Antohe, Roxana Ionela Vasluianu
12:10 12:25	3. Guided Implantology Tips and Tricks Eliza Dragan
12:25 12:45	4. Imaging Approach to Neuropathic Facial Pain Danisia Haba, Irina Danciu
12:45 13:05	5. Multidisciplinary Approach to Unexplained Facial Pain Andrei Bulgariu, Thomas Schreineir
13:05 13:25	6. Odontogenic Maxillary Sinusitis Between Missed Diagnosis and Imaging Evidence Ioana Martu, Cristian Martu

13:30 Closing Remarks and Farewell - Magnum Hall

ECD MFR 2026

The 20th European Congress of

DentoMaxilloFacial Radiology

Organizers:



EVENT MANAGEMENT



Phone: 0040 332.40.88.05

Email: contact@eventernet.ro

Web: www.eventer.ro